

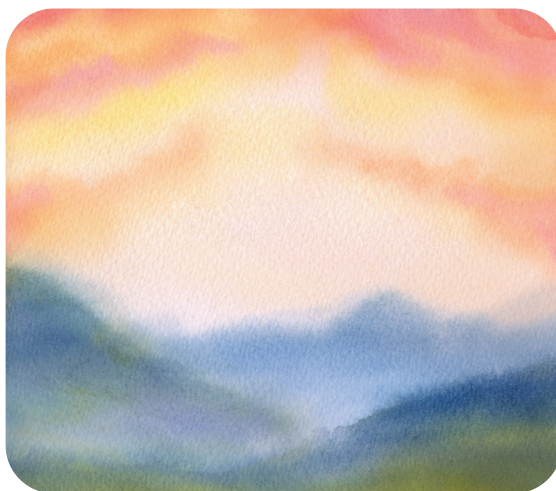
Every Morning's Sun
Sue Ellen Page
Lyrics by Eric D. Johnson

CGA1717
Unison with piano and
optional Orff instruments



choristersguild

Every Morning's Sun



www.choristersguild.org

Choristers Guild is a 501c3 nonprofit organization whose mission is to enable leaders to nurture the musical and spiritual growth of children, youth, and adults.

Every Morning's Sun

Eric D. Johnson

Sue Ellen Page

Medium waltz (♩ = 96)

Piano

mf

(pedal harmonically)

The piano introduction consists of four measures in 3/4 time, marked *mf*. The right hand plays a waltz-like melody with chords, while the left hand provides a harmonic accompaniment. A pedal point is indicated at the end of the first measure.

5 *mf*
Unison

Ev - 'ry morn - ing's sun fol - lows ev - 'ry eve - ning's night, and

mp

This system contains the first line of the vocal melody and piano accompaniment. The vocal line is marked *mf* and is a unison melody. The piano accompaniment is marked *mp*. The lyrics are: "Ev - 'ry morn - ing's sun fol - lows ev - 'ry eve - ning's night, and".

9

ev - 'ry day I know that it will come. _____

This system contains the second line of the vocal melody and piano accompaniment. The vocal line continues with the lyrics: "ev - 'ry day I know that it will come." followed by a long horizontal line indicating a sustained note. The piano accompaniment continues with a similar harmonic pattern.

Copyright © 1977 Choristers Guild. All rights reserved. Printed in U.S.A.
Reproduction of all or any portion in any form is prohibited without permission of the publisher.

The copying of this music is prohibited by law and is not covered by CCLI or OneLicense.net.

13

Ev - 'ry day of the year I know it will ap - pear, e-ven

17

though the clouds may hide it some, e-ven

mf *mp*

21

Orff 1
R L R L R L

though the clouds may hide it some.

mf

25

mp

Ev - 'ry spring - time's bloom fol-lows

mp

29

ev - 'ry win - ter's cold, and ev - 'ry year I know that it will

33

Orff 2
L R L

pp

come. _____ All the trees and flow'rs need

37

sun - shine and show'rs, and ev - 'ry year they get rain and sun,—

41

— and ev - 'ry year they get rain and

Orff 1

45

sun.

49

Ev - 'ry-where I look I see the work of God, and

53

ev - 'ry-where all na - ture calls God's name!

cresc.

57

Orff 2

Ev - 'ry-where I go in sun - shine, wind, or snow, I

mp

f

61

know that God will al - ways be the same, _____ I

This system contains measures 61 through 64. It features a vocal line, a piano accompaniment, and a bass line. The key signature has one sharp (F#). The vocal line begins with a whole note 'I' at the end of measure 64. The piano accompaniment consists of chords in the right hand and a bass line in the left hand.

65

Orff 1

Orff 2

mf

mf

know that God will al - ways be the same. _____

This system contains measures 65 through 68. It features a vocal line, a piano accompaniment, and a bass line. The key signature has one sharp (F#). The vocal line begins with a whole note at the end of measure 68. The piano accompaniment includes two Orff parts (Orff 1 and Orff 2) and a bass line. The Orff parts are marked with a mezzo-forte (*mf*) dynamic. The piano accompaniment consists of chords in the right hand and a bass line in the left hand.



69

The musical score for measures 69-72 is presented in three systems. The first system contains two staves: a vocal line in the upper staff and a piano accompaniment line in the lower staff. The second system contains a single staff with a vocal line. The third system contains two staves: a vocal line in the upper staff and a piano accompaniment line in the lower staff. The key signature is one sharp (F#) and the time signature is 4/4. The piano accompaniment features a steady eighth-note bass line and chords in the right hand. The vocal line consists of quarter and eighth notes, with some rests.