

I Will Show You the Way
Toni Sullivan

CGA1711
Unison with piano



choristersguild

Rote to Note
CHORAL SERIES

I Will Show You the Way



www.choristersguild.org

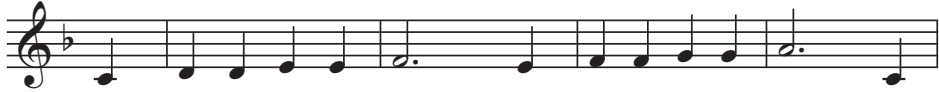
Choristers Guild is a 501c3 nonprofit organization whose mission is to enable leaders to nurture the musical and spiritual growth of children, youth, and adults.

Sacred Packet Fall 2023. Permission granted to make 1 copy only for the member's personal use only. This digital file may not be forwarded or otherwise shared.

Rote to Note Discovery Page

Repeated Notes

Let's check out this melody. Circle the repeated notes you find:



This melody is part of "I Will Show You the Way." Look inside your music to find this musical phrase. When you find it, write the measure numbers here:

measures _____

Can you sing this musical phrase in one breath?

"He taught them how to share and show God's love and care..."

Find the Note Pattern

Let's check out this melody. Can you find a pattern within these music notes? Talk about what you discover.



Now find this melody in your music. When you find it, write the measure numbers here:

measures _____

Is there also a pattern in the lyrics we sing? Can you sing this musical phrase in one breath?

"...in all they did and all they said to people ev'rywhere."

The **Rote to Note Choral Series** is designed to provide quality anthems for developing choirs, especially children's choirs, where young singers often experience choral singing and music reading for the first time. The vocal staff is intentionally enlarged to make it easier to read. Please purchase enough copies of the anthem for each singer, thereby encouraging their musical development.

Unauthorized copying or reproduction of this material, unless otherwise stated, is illegal.

I Will Show You the Way

Toni Sullivan

Toni Sullivan

Joyfully (♩=96)

Piano

3 *mf*

1. Je-sus called the twelve dis -
2. Je-sus calls us all to

6

ci - ples to fol - low him one day, to
fol - low and be dis - ci - ples, too. We'll

Copyright © 2023 Choristers Guild. All rights reserved. Printed in U.S.A.
Reproduction of all or any portion in any form is prohibited without permission of the publisher.

The copying of this music is prohibited by law and is not covered by CCLI or OneLicense.net.

CGA1711

9

hear the mes - sage of God's love and fol - low in God's
hear the mes - sage Je - sus taught and be part of God's

12

way. He taught them how to share and
crew. We'll learn just how to share and

15

show God's love and care in all they did and
show God's love and care in all we do and

18

all they said to peo - ple ev - 'ry - where. "Fol-low
all we say to peo - ple ev - 'ry day.

21

me! Fol-low me! I will show you the

24

way. I will show you the way." *poco rit.*

27

What if Je - sus asked me now to fol - low him and I said, "How?"

The musical score for measures 27-28 consists of a vocal line and a piano accompaniment. The vocal line is written in a single treble clef with a key signature of one flat (B-flat) and a common time signature. It features a series of eighth notes with 'x' marks above them, indicating a specific melodic line. The piano accompaniment is written in two staves (treble and bass clefs) and consists of block chords and single notes, primarily in the bass register.

29

He would say, "Look in your heart. Lov-ing oth-ers is a start.

The musical score for measures 29-30 continues the vocal and piano parts. The vocal line maintains the eighth-note pattern with 'x' marks. The piano accompaniment provides harmonic support with chords and moving lines in both hands.

31

Lend a help-ing hand to - day, use kind words in all you say.

The musical score for measures 31-32 concludes the vocal and piano parts. The vocal line continues with the eighth-note pattern. The piano accompaniment provides the final harmonic context for the passage.

33

Shar-ing, car - ing when you play, do things in a lov - ing way.

35

Fol-low me! Fol-low me! I will

38

show you the way. I will show



41

you the way.”